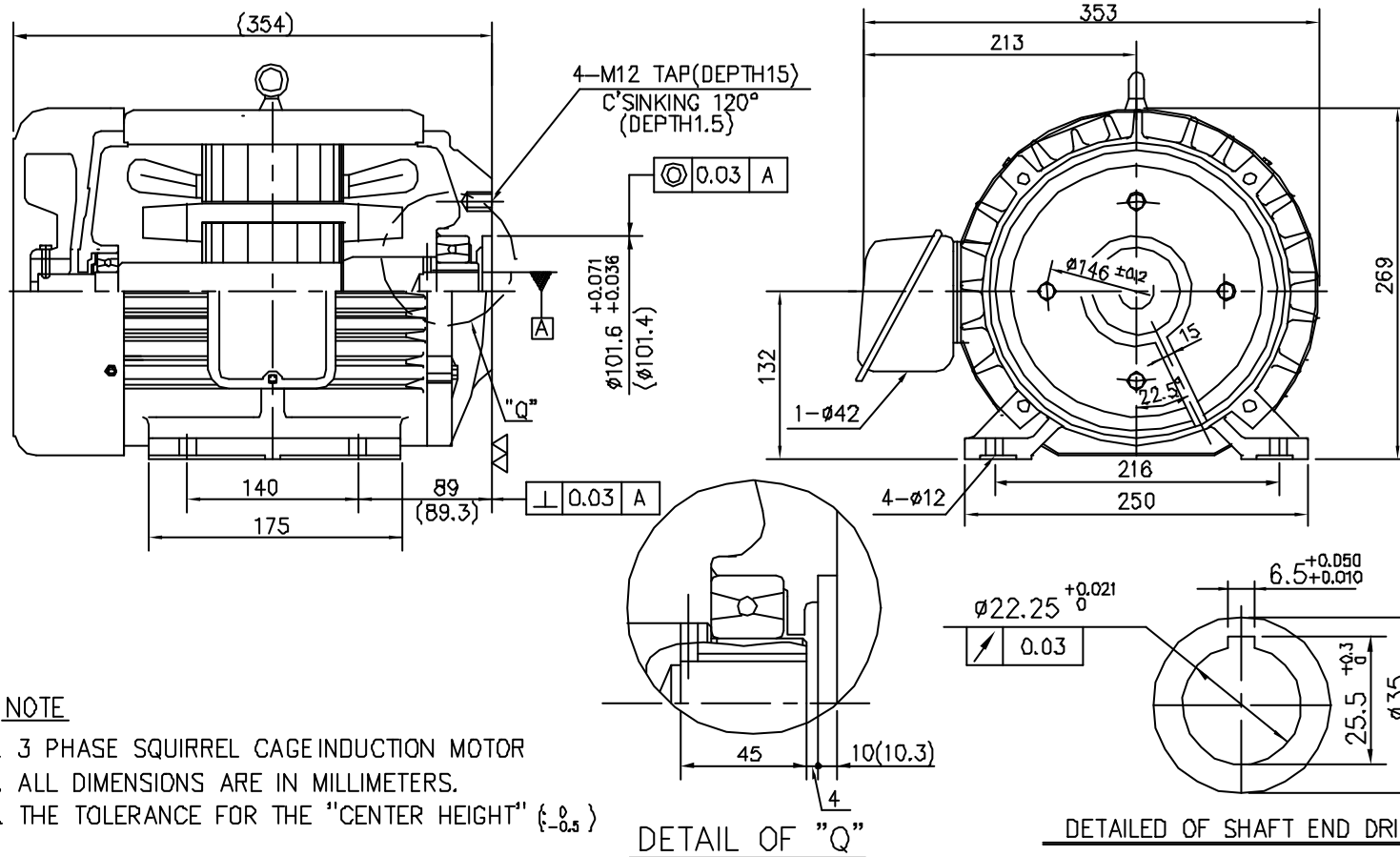


THREE PHASE INDUCTION MOTOR

TYPE ⇒ TOTALLY ENCLOSED FAN COOLED

OTHER SPECIAL FEATURES



<참 고>

1. SHAFT 끝단 흔들림은 0.05이하일 것.
2. ()안의 치수는 후가공전 치수임.

DRAWING
NO.

PREPARED

CHECKED

APPROVED

2000.08.10

2000.08.10

2000.08.10

Д И К А М

H.-J. KIM

J. H. KIM

LG-OTIS

[illegible]