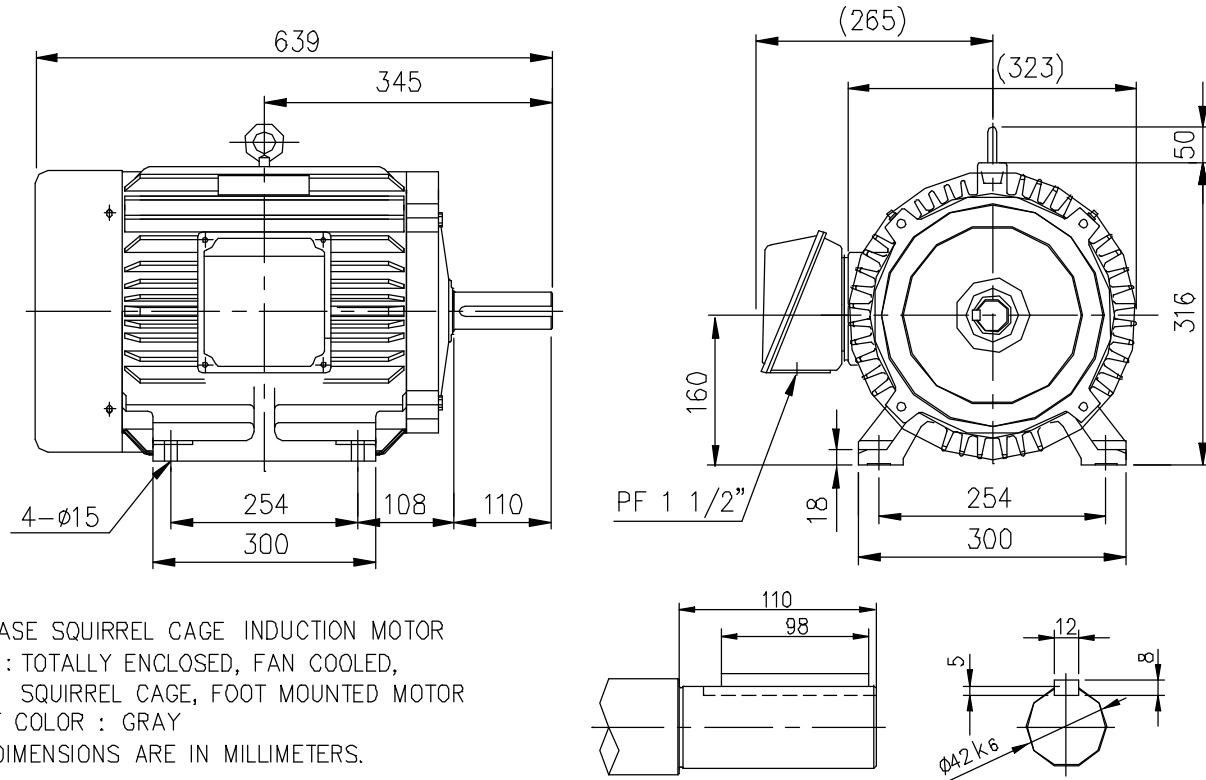


THREE PHASE INDUCTION MOTOR

TYPE ⇒ TOTALLY ENCLOSED FAN COOLED

OTHER SPECIAL FEATURES

OUTLINE DIMENSIONS



NOTE

1. 3 PHASE SQUIRREL CAGE INDUCTION MOTOR
2. TYPE : TOTALLY ENCLOSED, FAN COOLED, SQUIRREL CAGE, FOOT MOUNTED MOTOR
3. PAINT COLOR : GRAY
4. ALL DIMENSIONS ARE IN MILLIMETERS.

GENERAL SPECIFICATIONS

NO.	FRAME NO.	HP	POLE	VOLTS	HZ	INS. CLASS	SERVICE FACTOR	RATING	BEARINGS		APPROX. WEIGHT	PROTECTION	MODEL NAME
									DRIVE	OPP.DRIVE			
A	160L	20	4	440	60	F	1.0	CONT.	6309ZZ	6307ZZ	134KG	IP54	E20HV1IP
B													
C													
D													

- <참고>
1. ()의 치수는 참고치수임.
 2. 주물 단자 BOX 부착
 3. ??- ??- ??-??-??-??-?? 리.
 4. E/B(F,R) : V-RING 부착

DRAWING NO.		
PREPARED	CHECKED	APPROVED
'00.05.12 D.H.KAM	'00.05.12 S.RY.PARK	'00.05.12 C.K.KIM

LG·OTIS