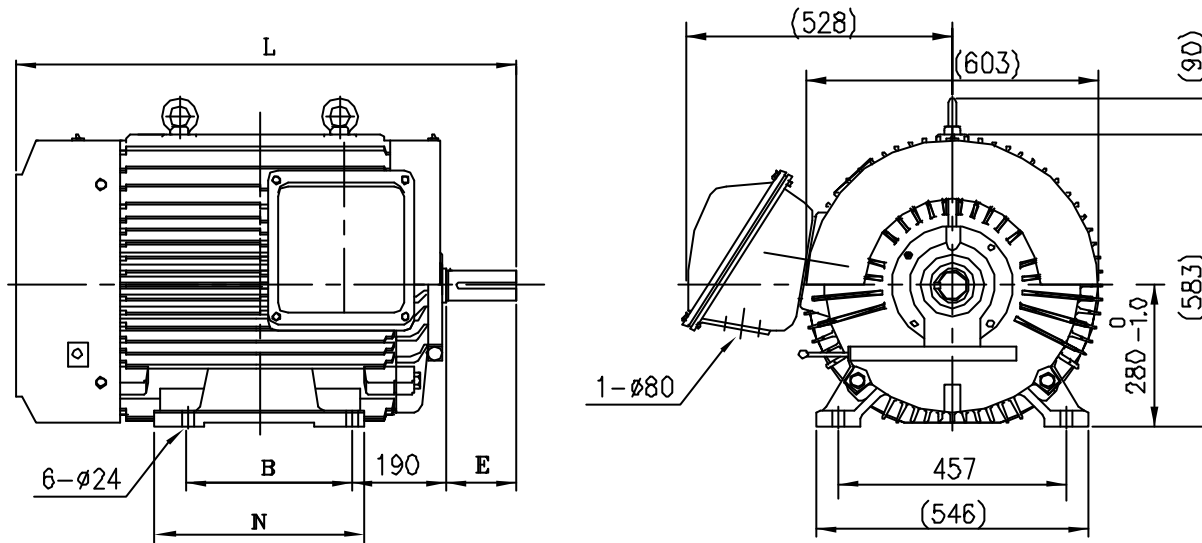


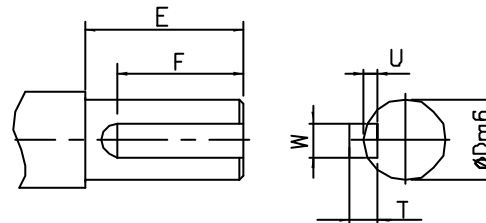
THREE PHASE INDUCTION MOTOR

OUTLINE DIMENSIONS



NOTE

1. 3 PHASE SQUIRREL CAGE INDUCTION MOTOR
2. TYPE : TOTALLY ENCLOSED FAN COOLED, FOOT-MOUNTED MOTOR.
3. ALL DIMENSIONS ARE IN MILLIMETERS.
4. THE TOLERANCE FOR THE KEY DIMENSIONS IS IN ACCORDANCE WITH KS B 1311-84



SHAFT EXTENSION

OTHER SPECIAL FEATURES

1. CAST IRON FRAME AND END BRACKETS.
2. STAINLESS STEEL NAME PLATE WITH CONNECTION DIAGRAM.
3. STEEL FAN COVER AND CAST TERMINAL BOX.

DRAWING NO.		
PREPARED	CHECKED	APPROVED
2000.07.10 H.K. KIM	2000.07.10 H.T.KIM	2000.07.10 J.H. KIM

FRAME NO.	OUTPUT(KW)				DEGREES OF PROTECTION	RATING	L	E	F	B	N	φ D	W	T	U
	2P	—	—	—											
280S/M	95/ 110,132	—	—	—	IP44	CONT.	970	140	110	368/419	518	60	15	10	5
280L/LL	150,185	—	—	—	IP44	CONT.	1060	140	110	457/508	580	60	15	10	5

**LG·OTIS**