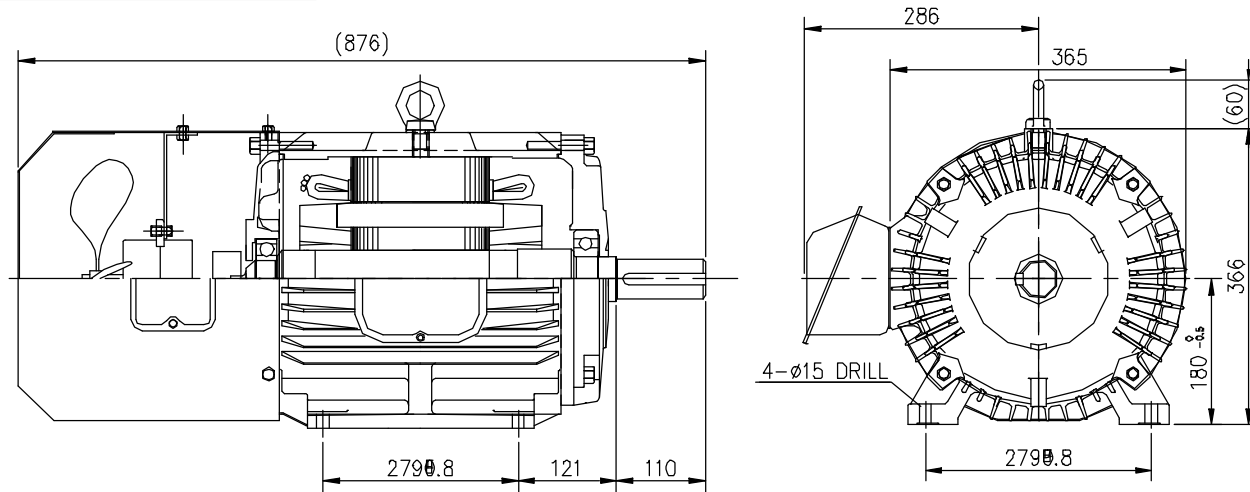


THREE PHASE INDUCTION MOTOR TYPE ⇒ TOTALLY ENCLOSED FAN COOLED

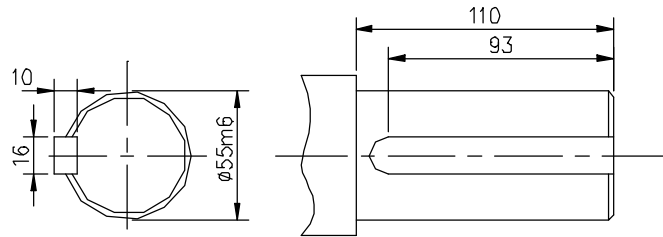
OTHER SPECIAL FEATURES

OUTLINE DIMENSIONS



NOTE

1. 3 PHASE SQUIRREL CAGE INDUCTION MOTOR
2. PAINT COLOR : GRAY
3. ALL DIMENSIONS ARE IN MILLIMETERS.
4. THE TOLERANCE FOR THE "CENTER HEIGHT" : (-0.5)
5. KEY TOLERANCE : KS B 1311 - 84



- <참고>
1. 2000.05.12
  2. ( ) 리서치
  3. MOTOR 2000-V30
  4. KEY : 16\*10\*93

GENERAL SPECIFICATIONS

SHAFT EXTENSION

NO.	FRAME NO.	HP	POLE	VOLTS	HZ	INS. CLASS	SERVICE FACTOR	RATING	BEARINGS		APPROX. WEIGHT	PROTECTION	MODEL NAME
									DRIVE	OPP. DRIVE			
A	180L	30	4	220/380	60	F	1.0	CONT.	6312ZZ	6309ZZ	232kg	IP44	V30HK1M
B													
C													
D													

DRAWING NO.

PREPEARED CHECKED APPROVED

2000.05.12  
C.K.KIM

**LG-OTIS**